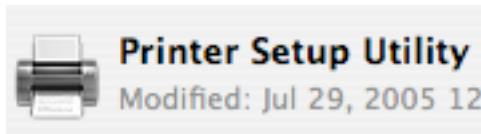
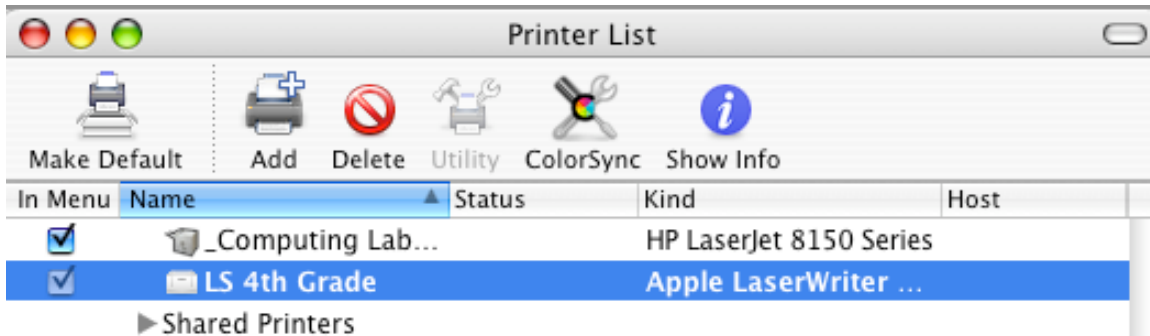


First check your loading dock to see if you have the print setup utility icon on it. The icon would like like this.

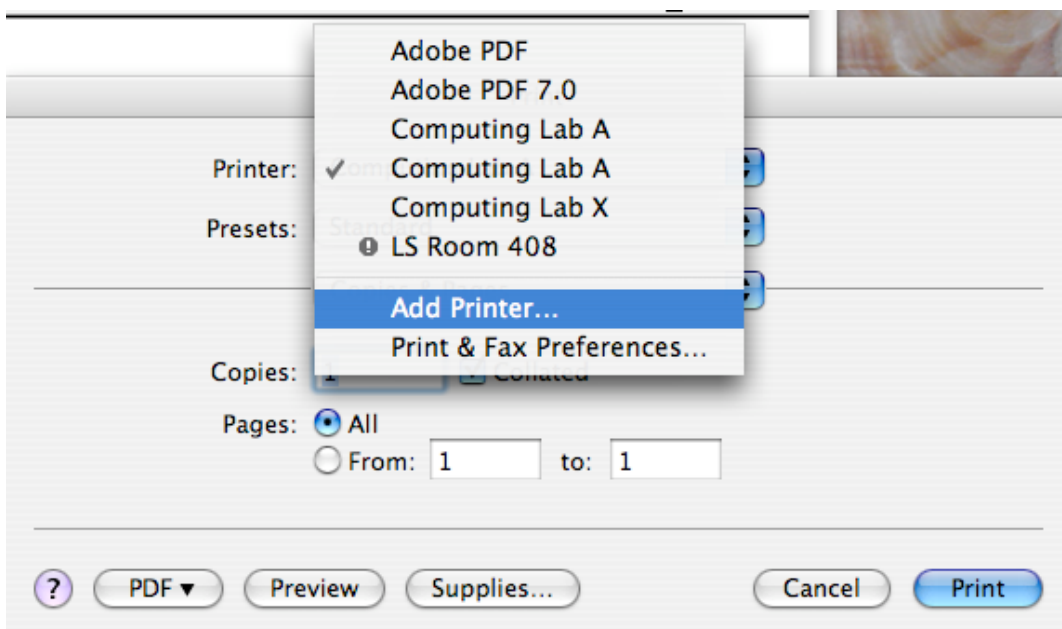


If it is there you can click on it and you should see this diagram

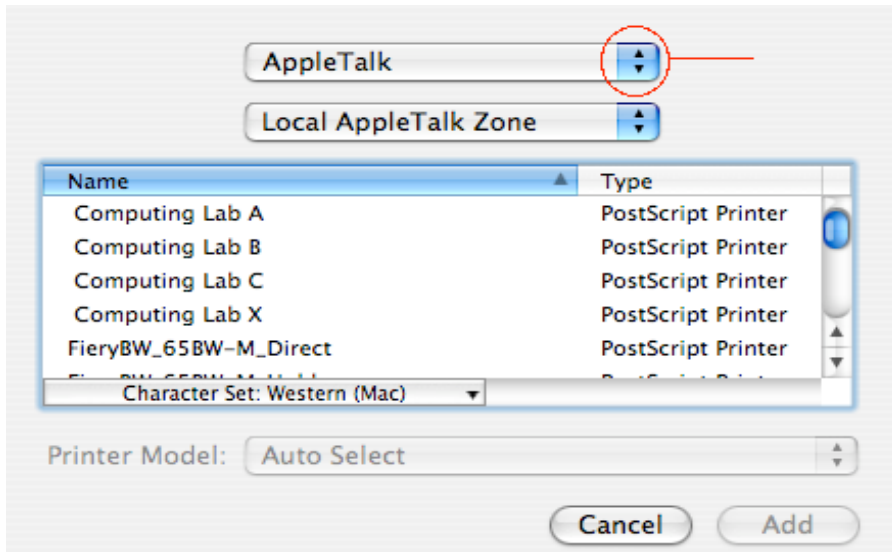


to **delete** an existing printer just click on it once then click on the delete button on the menu. To **add** a printer click on the add button.

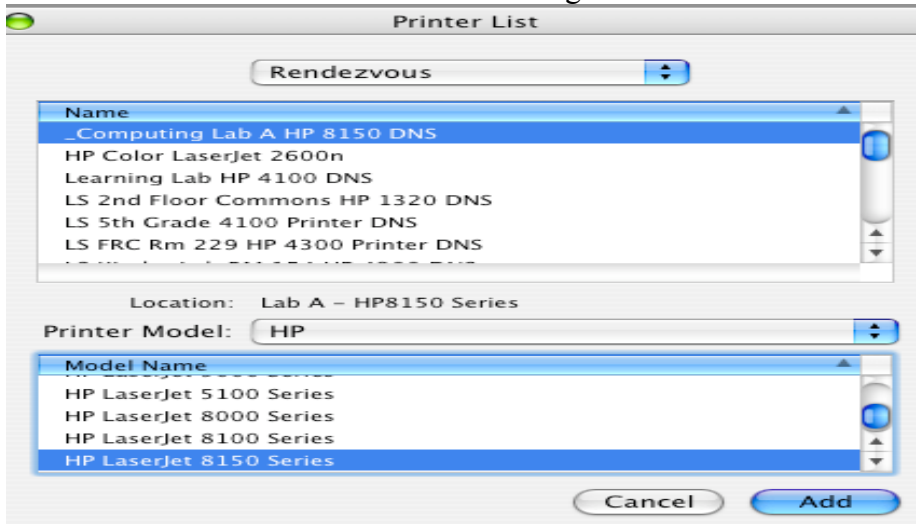
If you don't see the print setup utility on your dock you can go to the menubar and click on **File** and drag down to **Find**. Type in printer setup utility and it will find it or you could also attempt to print any document and when the following screen comes up drag down to add printer.



If the following screen comes up showing **Appletalk** you'll need to click on the arrow where it says Appletalk and drag to **Rendezvous** to make your printer selection.



The **Rendezvous** screen will look something like this:



When selecting one of the LS printers select the one with this naming convention.

- | | |
|-----------------------------------|---------|
| LS 2nd Floor Commons HP 1320 DNS | Bonjour |
| LS 5th Grade 4100 Printer DNS | Bonjour |
| LS FRC Rm 229 HP 4300 Printer DNS | Bonjour |
| _Computing Lab A HP 8150 DNS | Bonjour |
| LS Kinder Lab Rm 154 HP 4300 DNS | Bonjour |

If at all possible please do not pick from the appletalk printers list.