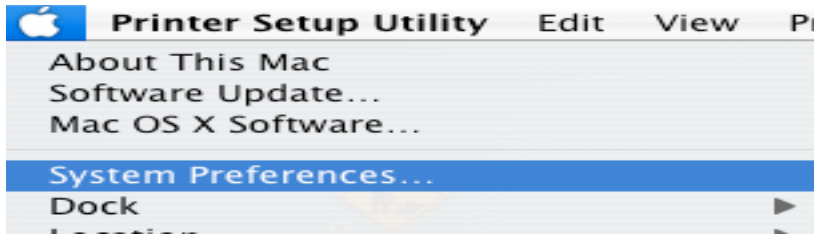
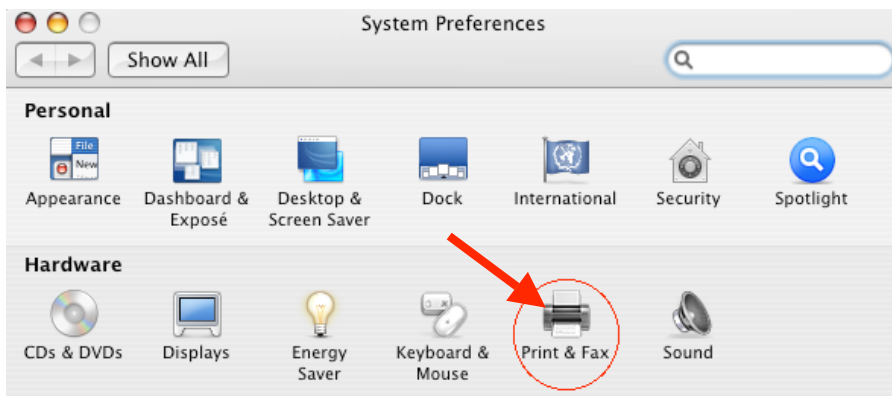


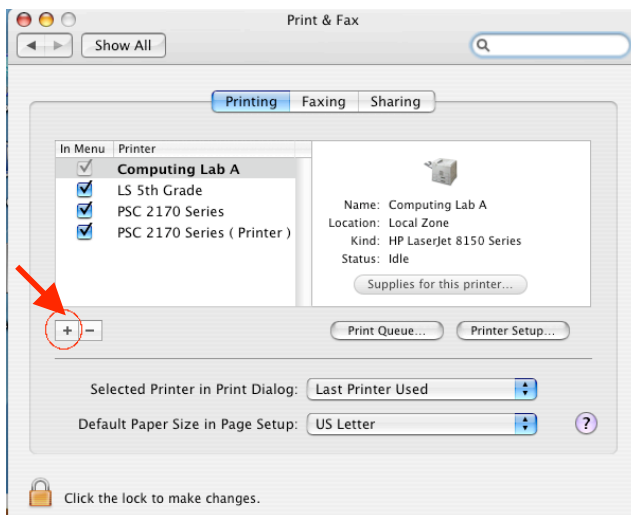
To select a printer click on the **Apple** icon in the upper left hand corner and drag down to **System Preferences**.



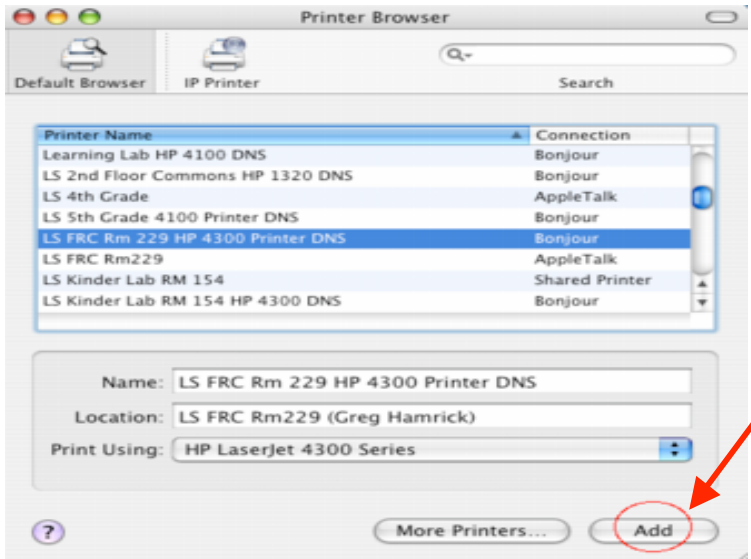
Click on the **Print & Fax** icon.



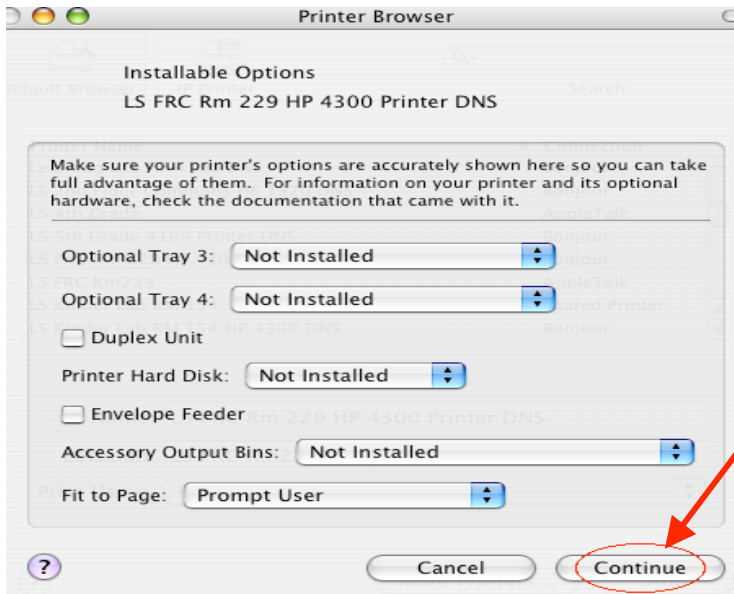
Click on the **+** sign shown below



The next screen will look something like this:



You'll need to click on the printer you want to add then click on the **add** button. Then you'll see this screen:



When selecting one of the LS printers select the one with this naming convention.

LS 2nd Floor Commons HP 1320 DNS

Bonjour

LS 5th Grade 4100 Printer DNS

Bonjour

LS FRC Rm 229 HP 4300 Printer DNS

Bonjour

_Computing Lab A HP 8150 DNS

Bonjour

LS Kinder Lab Rm 154 HP 4300 DNS

Bonjour

Do not pick the appletalk printers.